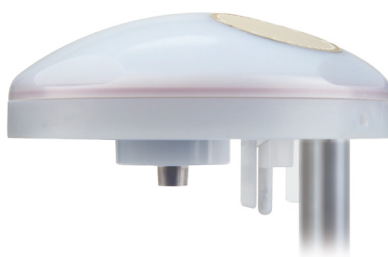
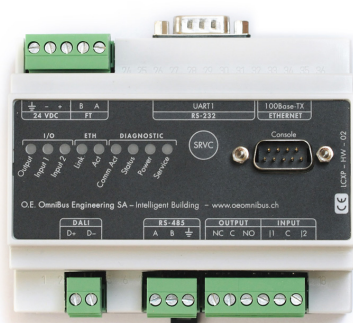


# Omni METEO

Complete interface for the acquisition  
and the management of meteorological data.



The device OmniMETEO allows to manage the weather stations provided by Thies Climate GmbH using a connection RS-485. At the moment, the models Climate Sensor D and Compact Weather Station WSC 11 may be used.

Tipologia	Modelli	
	WSC 11	Clima Sensor D
Luminosity south	YES	YES
Luminosity east	YES	YES
Luminosity west	YES	YES
Luminosity north	YES	NO
Twilight switch	YES	YES
Wind speed / direction	YES / YES	YES / NO
Rain/Frost	YES / YES	YES / YES
External temperature	YES	YES
Total sunlight	YES	NO
Atmospheric pressure relative/absolute	YES / YES	NO / NO
Humidity relative/absolute	YES / YES	YES / NO
Position of sun	YES	NO
Determination position GPS	YES	NO
Date and time from GPS	YES	NO

*The acquired weather information is made available on the Lonworks network using LonMark objects that provide standard variables (SNVT) of the appropriate format.*

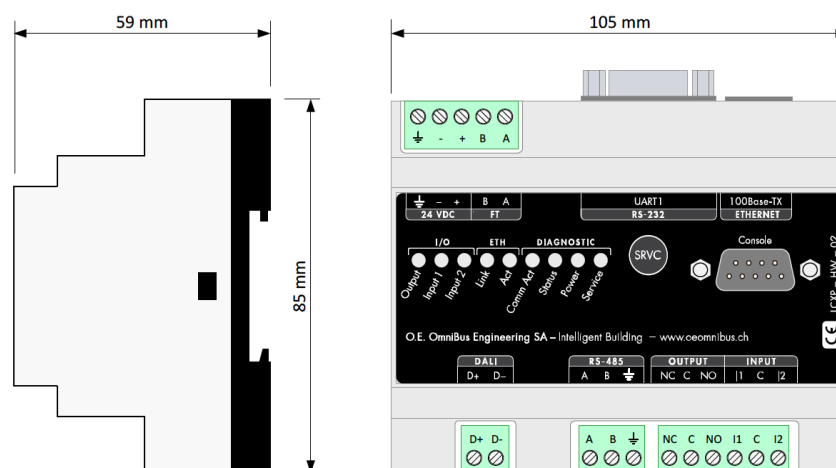


## OMNI METEO

## Technical specifications

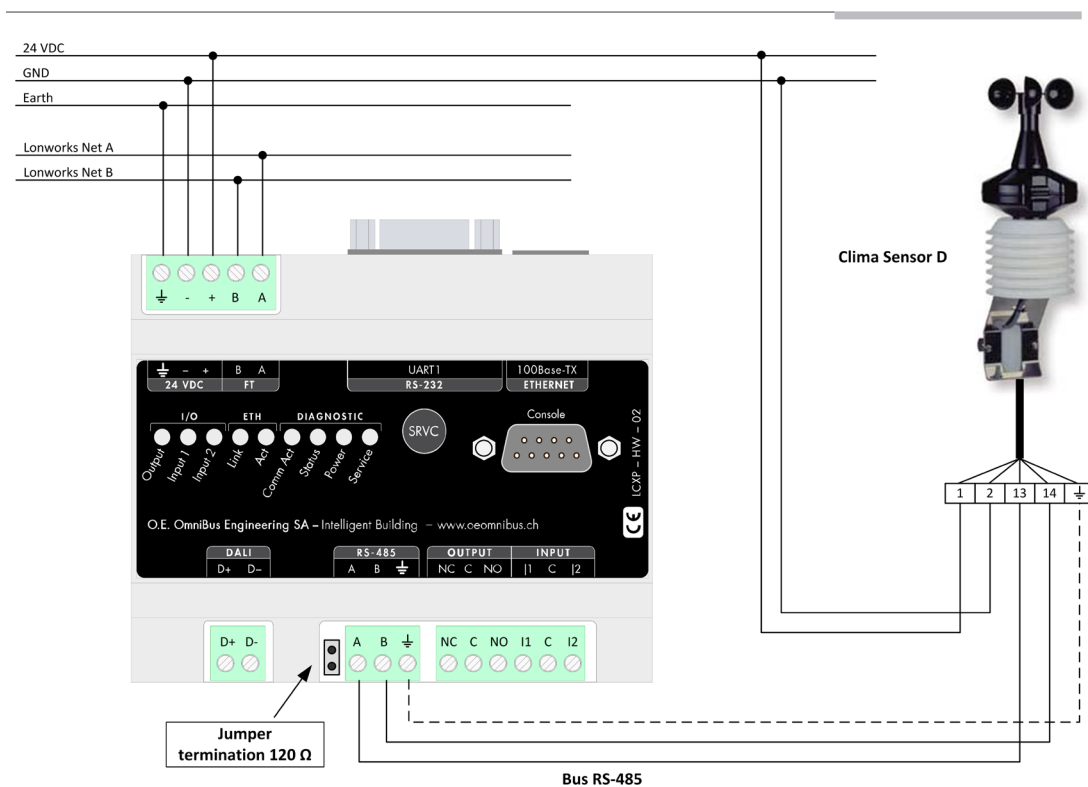
Power supply	21...27 VDC, 0.25 A (Power supply SELV according to regulation EN 60950-1) Removable connector 5-Pin 5.08 mm pitch (shared with Lonworks interface)
Communication interface	Lonworks FTT-10 78Kbps 2- wire without polarity, removable connector 5.08 mm pitch Ethernet 10/100 Mbits, with standard connector RJ45 RS-232 (interface for configuration console), male connector D-SUB 9-pin
CPU	CPU 32 bits ARM7 LC3020 @ 50 MHz Real Time Clock con backup battery
Memory	8 MB Flash 16 MB SDRAM
Digital outputs	1 relay with NA and NC contacts. Characteristics of resistive loads Maximum switching power 60 W Maximum switching voltage 27 VDC Maximum switching current 2 A Removable connector 6-Pin 5.08 mm pitch (shared with digital inputs)
Digital inputs	2 self-powered inputs (potential free contacts). Removable connector 6-Pin 5.08 mm pitch (shared with digital outputs)
Environmental operating limits	Temperature: 0°...+45 °C Humidity: 10..90% @ +50°C non-condensing
Environmental limits for storage	Temperature: 0°...+45 °C Humidity: 10..90% @ +50°C non-condensing
Container	Polycarbonate container (UL 94 V-0) white (top) and black (bottom) for assembly on a DIN rail
Dimensions	105 x 115 x 60 mm (length x width x height)
Assembly	On DIN rail, according to regulation EN 50022 Do not install outdoors or in humid environments (bathrooms, swimming pools, etc.) if not in containers with proper protection for use.
Disposal	Dispose in compliance with the directives 2002/95 / EC (WEEE devices)

## Size and Layout

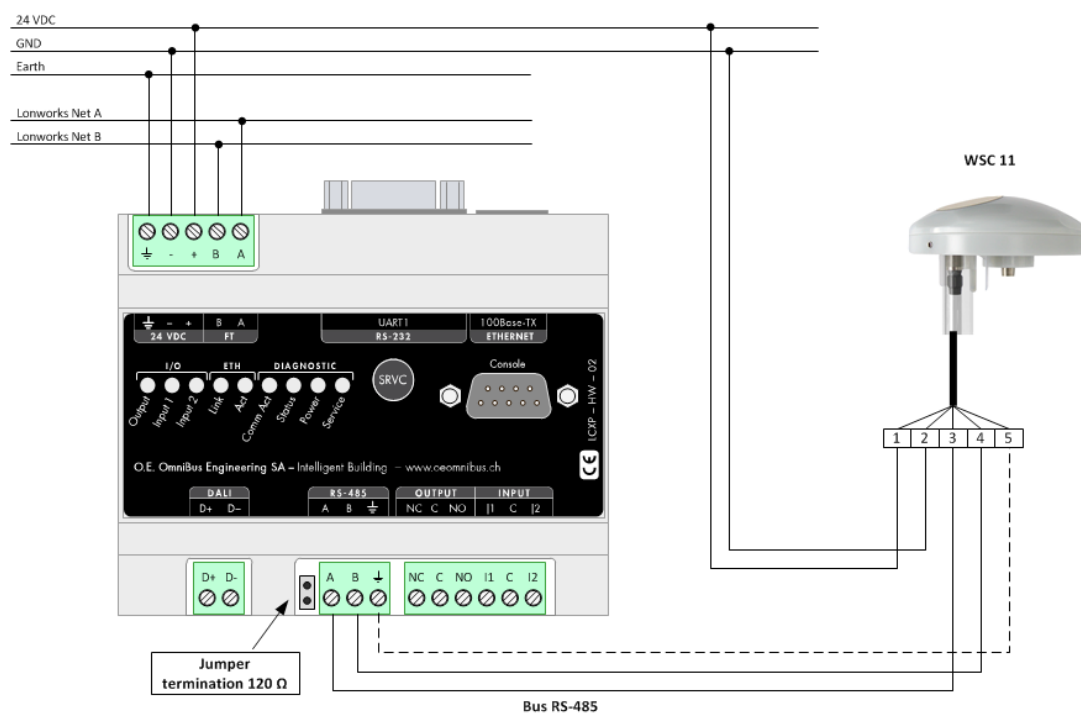


## OMNI METEO

### Connection between OmniMETEO and Clima Sensor D



### Connection between OmniMETEO and WSC 11



## OMNI METEO

## Digital inputs and outputs

